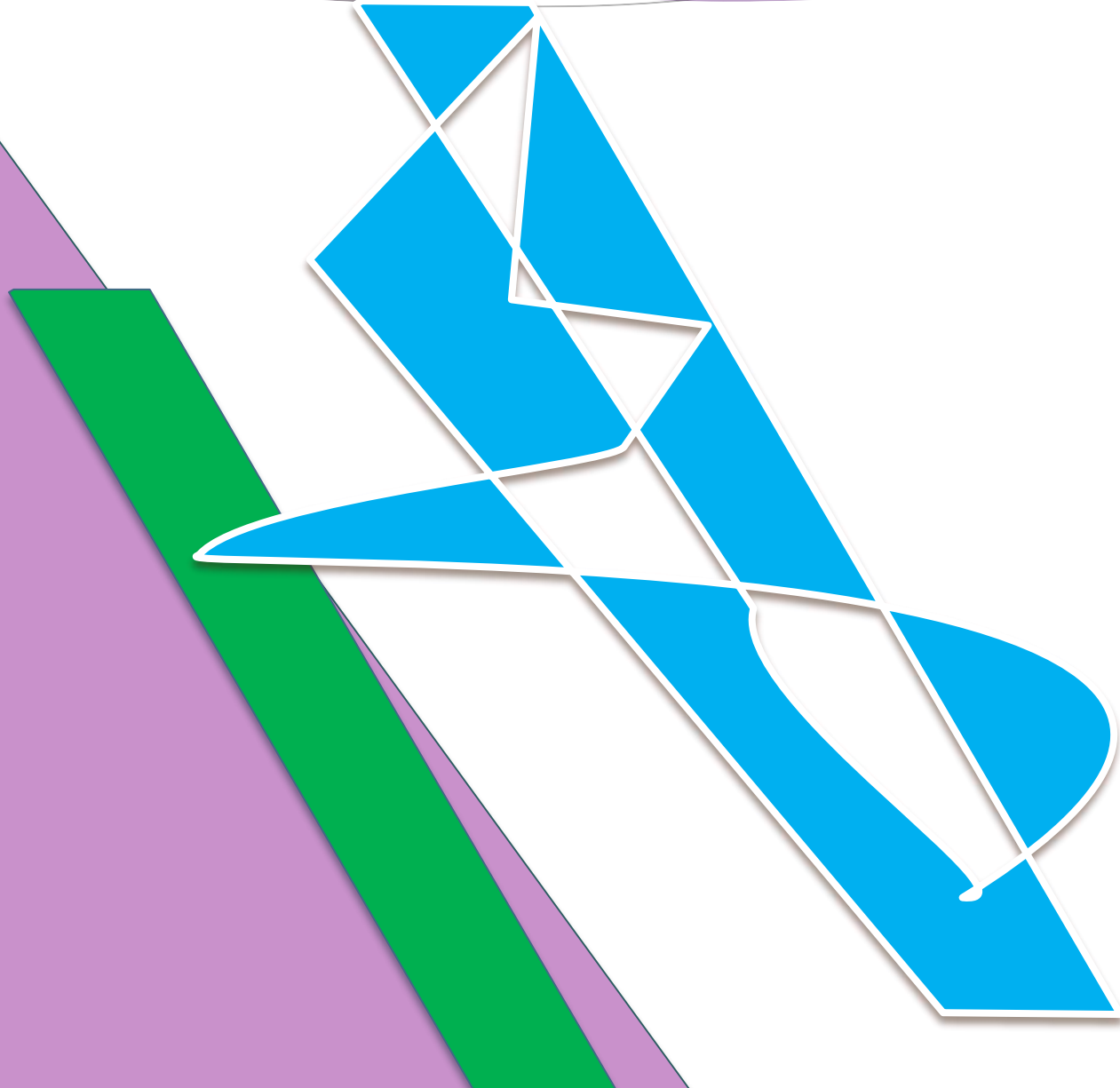




**“Unity Is Strength”**

Plot No. P/04, Mohora(Noxious), CDA Industrial Area , Kalurghat,  
Chittagong-4208, Bangladesh. Tel: (88)-031-670344,  
670345, <http://info@shymsfashions.com>



## Our Company Overview

JOIN WITH US FOR THE BRIGHT FUTURE

OUR RESOURCES AND STRENGTHS

Modern machinery including and skilled workers dedicated are the strength of Suji Fashions Limited .Company's Total Quality Assurance Management System and Continuous improvement of efficiency levels in all process ensure the product and service provides greatest possible value for the clients.



Building Extent



West Elevation



North Elevation



Roof Extent



East Elevation



### SUJI FASHIONS LIMITED

An Export Oriented Garments Industry



# Company Information

## Summary information

- 1 LOCATION**  
 Plot No# P/04, Mohora(Noxious), CDA Industrial Area,Kalurghat,Chittagong-4208, Bangladesh.
- 2 LAND SPACE**  
 1 plot X 21,863 sqm = 21,863 sqm
- 3 FACTORY SPACE**  
 47,562 sqm
- 4 LINE FOR PRODUCTION**  
 Woven – 08 Line
- 5 MACHINERY**  
 630set.
- 6 MAN POWER**  
 989
- 7 PRODUCTIVITY**  
 14 Lac 40 Thousand Pcs per a year.

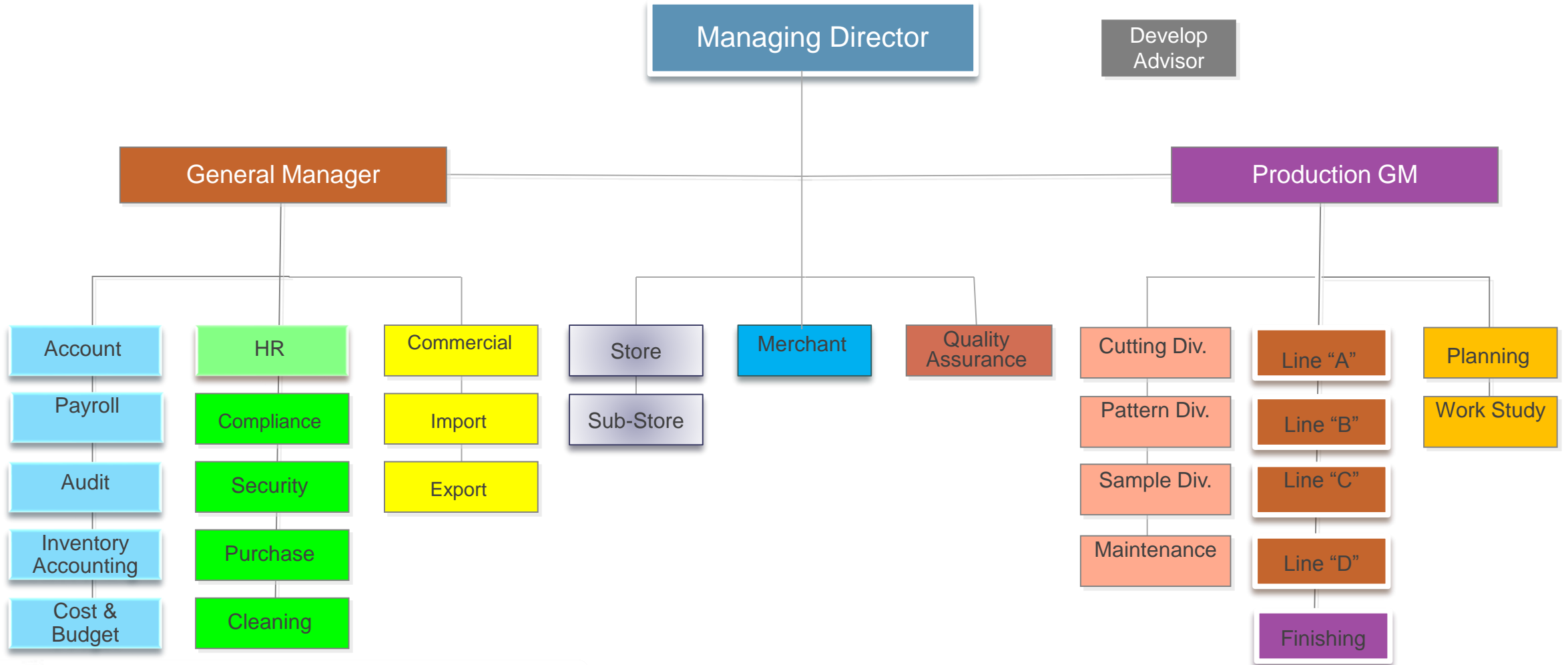


# CERTIFICATION

Already we are under supervision of Accord



# COMPANY ORGANIZATION



# Our mission

To be a recognized model of production standards, style and quality in the apparel industry.

BEST QUALITY

COMPLIANCE



**CUSTOMER'S SATISFACTION**

ON TIME  
DELIVERY

SAFE  
ENVIRONMENT

# COMPANY HISTORY

Established in 1st January,2017 with a synopsis to establish a best-woven top & bottom  
Established in 1st January,2017 with a synopsis to establish a best garments factory,  
The existing workforce of the Suji totals to over Seven hundred Employees. The  
production team is comprised of skilled labor--70% of whom are women -- and  
competent national and expatriate managers. Merchandizing, Finance, Human  
Resources, Compliance, and Information Systems are located in the Office.

The corporate culture of Suji promotes open communication, innovation and  
rewards excellence. Managers and staff achieve spectacular results because of  
their training and product knowledge. Excellent salaries supplemented with  
performance incentives motivate workers to achieve highest levels of  
productivity.

COMPLAINE COC



- ✓ Suji Fashions Ltd. does not employ anyone below the legal age of employment.
- ✓ Discourage the use of Child Labor and Young Labor (as per its work condition).
- ✓ In case all legal limitations on the employment of persons below the age of 18 years being implemented,



- ✓ No hazardous equipment or unsafe buildings.
- ✓ Relevant first aid equipment is available and a doctor or nurse is available during working hours.
- ✓ Ensure healthy atmosphere at the workplace.
- ✓ Well trained first Aid team and full time doctors.



- ✓ Discourage any form of forced labor or bonded labor, or prison labor.
- ✓ Confirmation of minimum wages, and paid with in the first 07 (seven) working days of every month.
- ✓ All the employee have been treated with respect and dignity.
- ✓ No Discrimination and no employee is subject to physical, sexual, psychological or verbal harassment or abuse.
- ✓ Employee have the right to form or join associations of their own choosing, and to bargain collectively.



## COMPLAINE COC



- ✓ Installed the Fire Rated Door (2 hrs) at every Exit points.
- ✓ Centrally fire alarm system, with continuous monitoring of PA
- ✓ almost 100% employee have been trained by Alliance.
- ✓ Full time CCTV monitoring.
- ✓ 22/7 a day own security guards.
- ✓ Adequate PPE has been provided and periodic training on PPE importance.

## CODE OF ETHICS

- ✓ Suji believe that when we are out of quality we are out of business.
- ✓ It main motto is to provide better quality product with reasonable price.
- ✓ Maintaining AQL 2.5
- ✓ Adequate members of QAM team.
- ✓ having adequate machineries such as- Pull Test, Needle Detector, Fabrics Inspection etc.

## TRAINING



- ✓ Education and training are as important to Shyms as are its business achievements. Visiting professionals and consultants regularly impart training on skill enhancement, morale, social accountability, health, safety, compliance, and other relevant areas. This ensures that its customers and suppliers receive value in their transactions.

# CUSTOMERS



**SUJI FASHIONS LIMITED**

An Export Oriented Garments Industry

# Main Customers

## Introduction

**INDITEX**

Z A R A

PULL&BEAR

*Massimo Dutti*

Bershka

 Stradivarius

OYSHO

Z A R A H O M E

UTERQÜE



**SUJI FASHIONS LIMITED**

An Export Oriented Garments Industry

## OUR MAKING PRODUCT

Suji has successfully assimilated these changes and can meet the needs of its customers across all these manifestations. Suji has with its technical expertise achieved amazing results that are a judicious blend of raw material and workmanship.

**Main products are as follows:**

- Woven Jacket (Casual, Semi-Formal & Formal) for all the gender
- Trousers (Casual & Semi-Formal)



# OUR MANUFACTURE



**SUJI FASHIONS LIMITED**

An Export Oriented Garments Industry

# OUR MANUFACTURE



**SUJI FASHIONS LIMITED**

An Export Oriented Garments Industry



# OUR MANUFACTURE

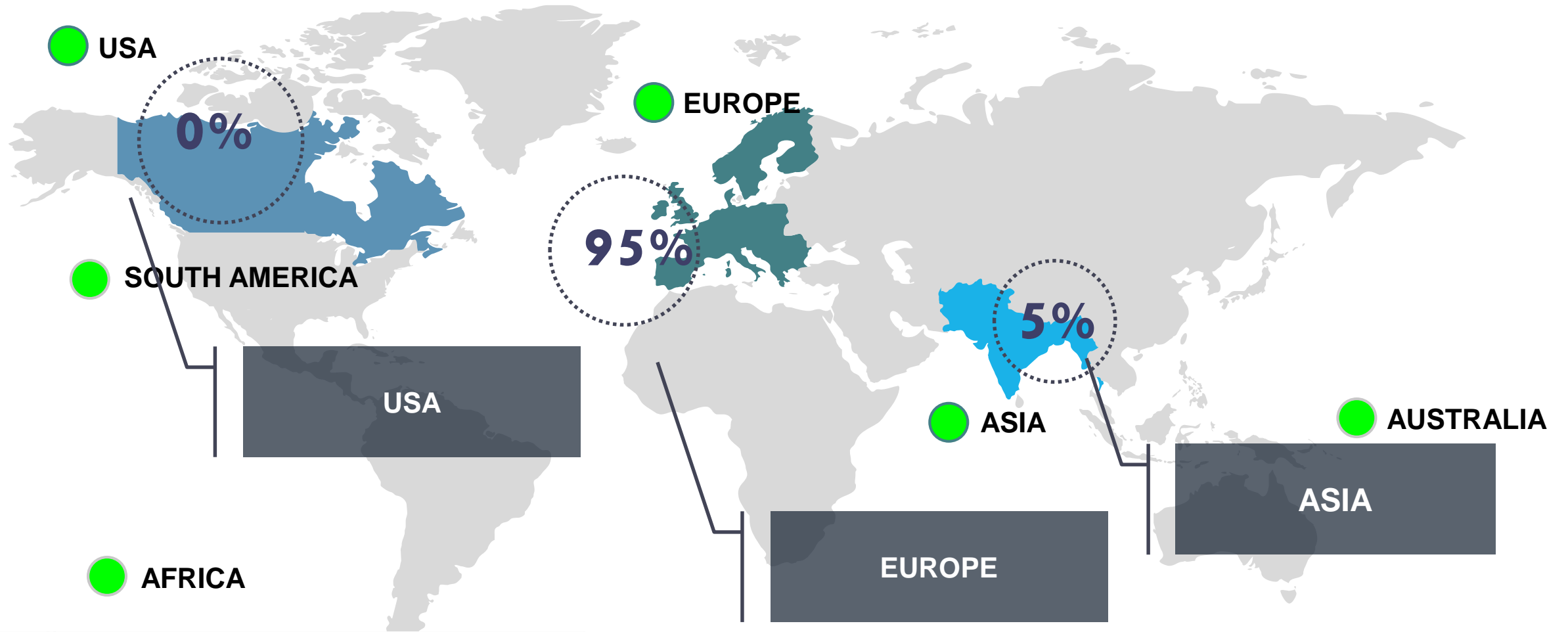


**SUJI FASHIONS LIMITED**

An Export Oriented Garments Industry



# COUNTRIES OF EXPORTING



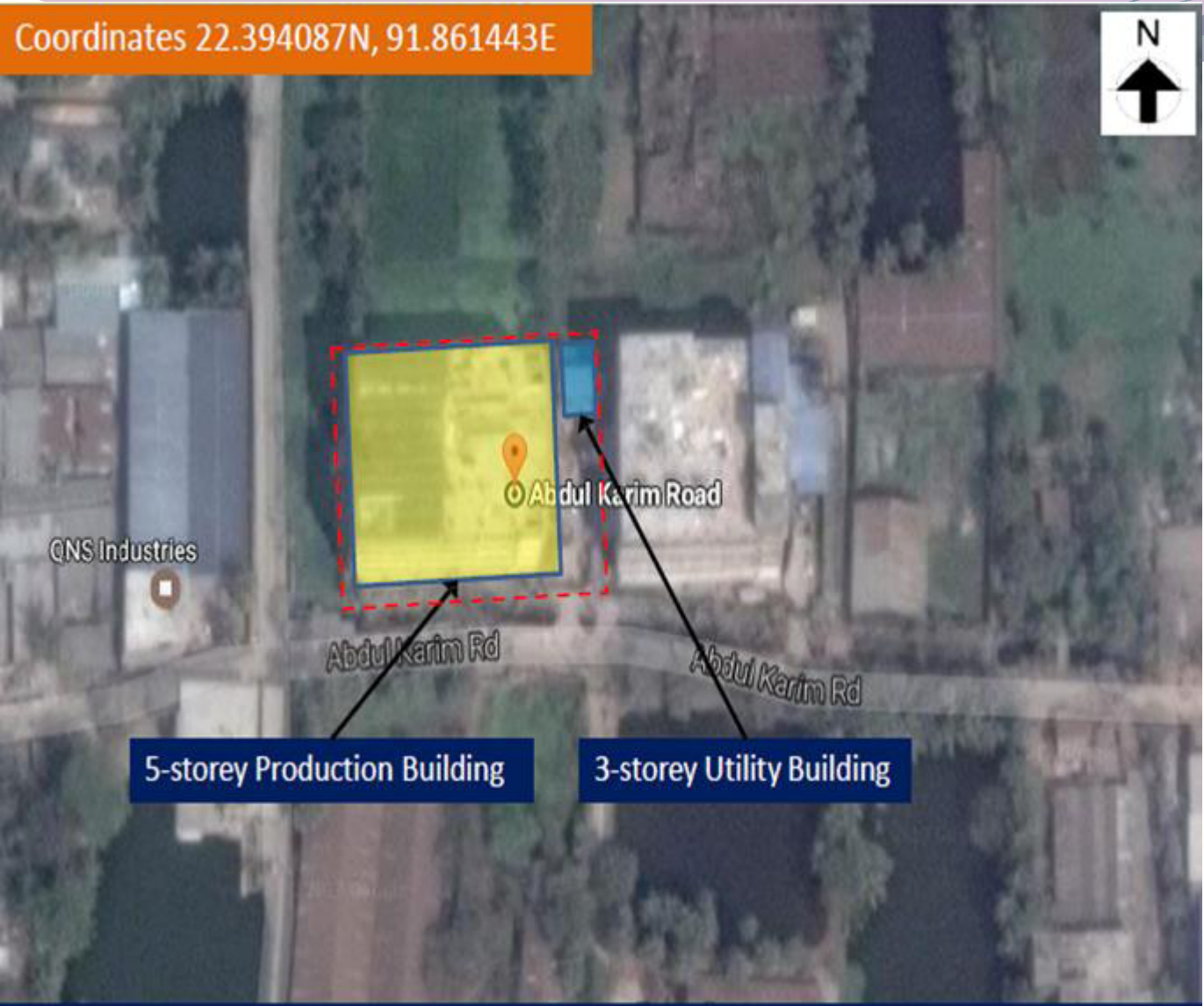
**SUJI FASHIONS LIMITED**

An Export Oriented Garments Industry





Coordinates 22.394087N, 91.861443E



Suji Fashions Ltd. – Factory Site Location



## FABRIC WARE HOUSE

Deliver an exceptional experience to customers with superior quality product, service and value to satisfy the customer ultimately.



**SUJI FASHIONS LIMITED**

An Export Oriented Garments Industry



**SUJI FASHIONS LIMITED**  
An Export Oriented Garments Industry

## **FACTORY INSIDE SECTION**

Deliver an exceptional experience to customers with superior quality product, service and value to satisfy the customer ultimately.



**SUJI FASHIONS LIMITED**

An Export Oriented Garments Industry

## SEWING SECTION

Deliver an exceptional experience to customers with superior quality product, service and value to satisfy the customer ultimately.



**SUJI FASHIONS LIMITED**

An Export Oriented Garments Industry

## **SEWING SECTION VIEWS**

Deliver an exceptional experience to customers with superior quality product, service and value to satisfy the customer ultimately.

## DOCTORS ROOM

Suji maintains, all the production facilities, appropriately equipped Medical Center which are run by full time trained professionals.



**SUJI FASHIONS LIMITED**

An Export Oriented Garments Industry



## **SAMPLE ROOM**

Deliver an exceptional experience to customers with superior quality product, service and value to satisfy the customer ultimately.



## CUTTING SECTION

Deliver an exceptional experience to customers with superior quality product, service and value to satisfy the customer ultimately.



**SUJI FASHIONS LIMITED**

An Export Oriented Garments Industry





## SEAM SEALING

Deliver an exceptional experience to customers with superior quality product, service and value to satisfy the customer ultimately.



## FINISHING SECTION

Deliver an exceptional experience to customers with superior quality product, service and value to satisfy the customer ultimately.



**SUJI FASHIONS LIMITED**

An Export Oriented Garments Industry



## MANAGING DIRECTOR ROOM

Deliver an exceptional experience to customers with superior quality product, service and value to satisfy the customer ultimately.



**SUJI FASHIONS LIMITED**

An Export Oriented Garments Industry